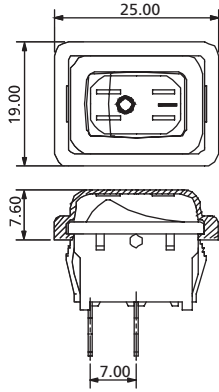


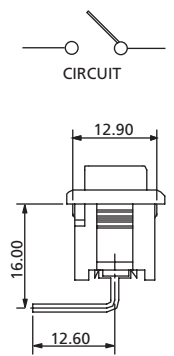
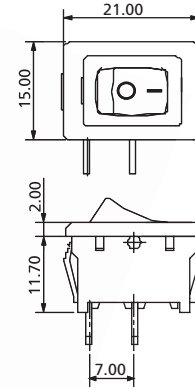
# Rocker Switches

## 21 x 15 mm SP Rocker Switches

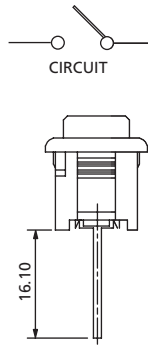
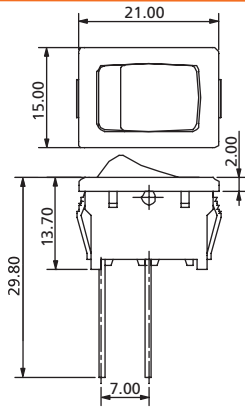
## RK4 Series



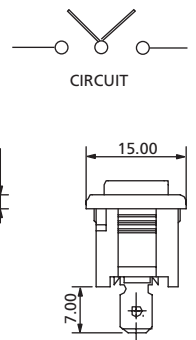
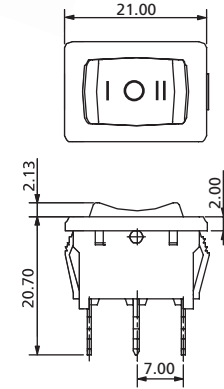
**RK4S1Q4D** \_ \_ \_ \_



**RK4S1R4D** \_ \_ \_ N

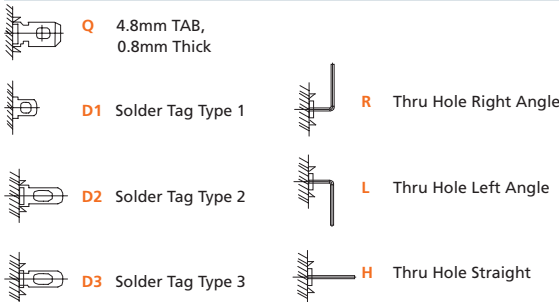


**RK4S1H4A** \_ \_ \_ N

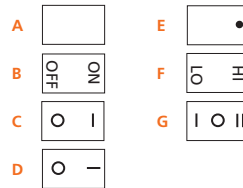


**RK4S3Q4G** \_ \_ \_ N

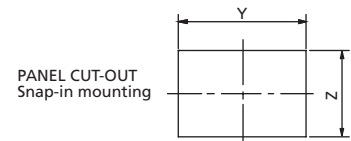
### TERMINAL



### ACTUATOR MARKING



### PANEL SIZE



X (Panel thickness)	Dimension Y	Dimension Z
0.75 to 1.25 mm	19.20 +0.1/-0 mm	12.90 +0.15/-0 mm
1.25 to 2 mm	19.40 +0.1/-0 mm	12.90 +0.15/-0 mm
2 to 3 mm	19.80 +0.1/-0 mm	12.90 +0.15/-0 mm

## How to order:

RK4

- 1** POLES:  
S Single Pole
- 2** SWITCHING:  
1 ON - OFF  
2 ON - ON  
3 ON - OFF - ON  
4 MOM - OFF
- 3** TERMINAL (See above drawings):  
Q 4.8mm TAB, 0.8mm THICK  
D1 Solder Tag Type 1  
D2 Solder Tag Type 2  
D3 Solder Tag Type 3  
R Thru Hole Right Angle  
L Thru Hole Left Angle  
H Thru Hole Straight
- 4** ACTUATOR:  
4 Curve
- 5** ACTUATOR MARKING:  
A See above drawings  
B See above drawings  
C See above drawings  
D See above drawings  
E See above drawings  
F See above drawings  
G See above drawings
- 6** BASE COLOR:  
A Black  
H Grey  
B White
- 7** ACTUATOR COLOR:  
A Black  
H Grey  
B White  
C Red
- 8** WATERPROOF COVER:  
N None Cover (Standard)  
W With Waterproof Cover

## General Specifications:

### FEATURES

- » Single pole rocker switch up to 20A 125VAC
- » Non illuminated

### MATERIALS

- » Contact Arm: Silver cadmium alloy
- » Terminals: Silver plated copper
- » Spring: Piano wire

### MECHANICAL

- » Temperature Range: -20°C to +125°C

### ELECTRICAL

- » Electrical Life: 10,000 cycles
- » Rating: 20A125VAC, 12A250VAC  
10A125VAC, 6A250VAC  
6A125VAC, 3A250VAC  
6A250VAC  
10(4)A250VAC-T125
- » Initial Contact Resistance: 20mΩ max.
- » Insulation Resistance: 100MΩ min. at 500VDC